



Product Mark

Model: ДСО 1 (3.30.00.72.460.20.00)

Temperature: 25°C

Tester: Романов

Фотометрический отчет

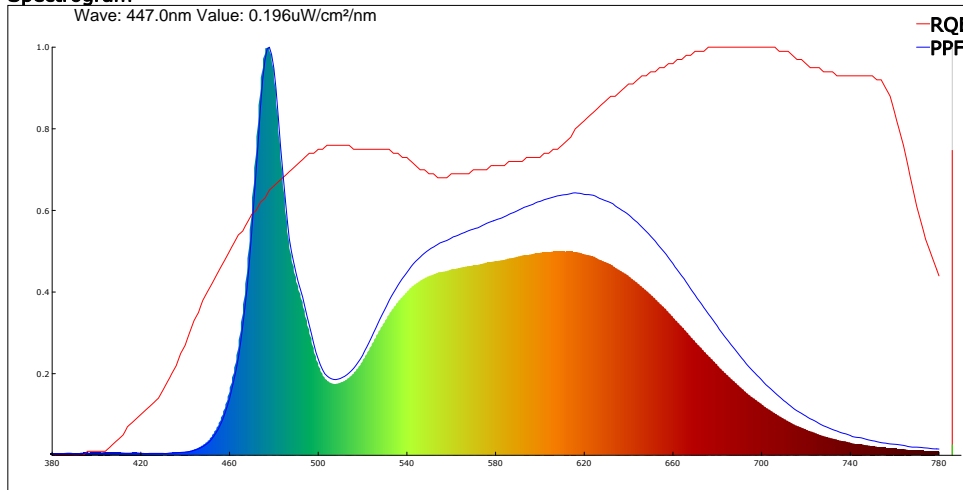
Humidity: 65%

Test Date: 2023-01-23,10:43:56

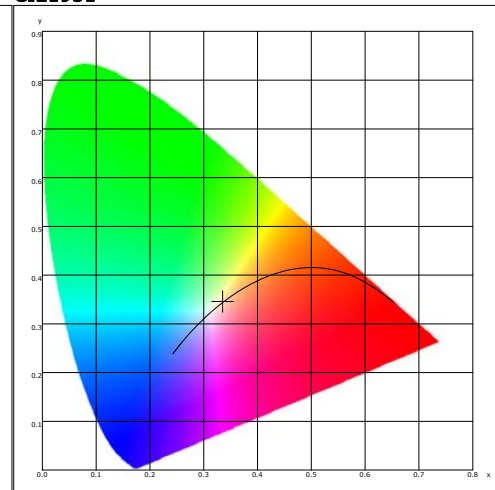
Parameter

Name	Value	Name	Value	Name	Value	Name	Value
E(lx)	3201.14	Purity(%)	4.3	Er(W/M ²)	2.359	Kppfv(umol/s/klm)	13.902
Candle E(fc)	297.39	HalfWidth(nm)	18.3	Euv(W/M ²)	0.032	YPPFD(umol/m ² /s)	38.414
CCT(K)	5185	Peak(nm)	447.6	Efr(W/M ²)	0.000	Ep(W/M ²)	8.409
Duv	0.00108	Center(nm)	448.3	Eir(W/M ²)	0.009	Integral Time(ms)	50
CIE x,y	0.3352,0.3456	Centroid(nm)	545.9	Ec(W/M ²)	0.000	Peak Signal	48970
CIE u,v	0.2070,0.3201	Color Ratio(RGB)	15.1,82.0,3.0	Erb Ratio	0.811	Dark Signal	1685
CIE u',v'	0.2070,0.4802	CIE1931 X	4546.229	PAR(W/M ²)	10.045	Compensate level	2870
SDCM	1.81	CIE1931 Y	4686.884	EchA(W/M ²)	0.000	Voltage(V)	219.100
Ra	82.6	CIE1931 Z	4329.637	EchB(W/M ²)	0.000	Current(A)	146.000
Ee(W/M ²)	9.954	TLCI-2012	12	PPFD(umol/m ² /s)	44.502	Power(W)	31.180
Ebh(mW/m ²)	0.231	FlickerFrequency Hz	0.00	PPFD_UV(umol/m ² /s)	0.098	Power Factor	0.972
Bek(uW/lm)	0.72	FluctuateDepth(%)	74.4	PPFD_B(umol/m ² /s)	11.022		
S/P	2.003	BinkPercent(%)	59.3	PPFD_G(umol/m ² /s)	21.095		
TM-30 Rf	61.90	BinkExponent	0.16	PPFD_R(umol/m ² /s)	12.385		
TM-30 Rg	76.90	Eb(W/M ²)	2.910	PPFD_FR(umol/m ² /s)	0.770		
Dominant(nm)	560.60	Ey(W/M ²)	4.608	PPFD_IR(umol/m ² /s)	0.057		

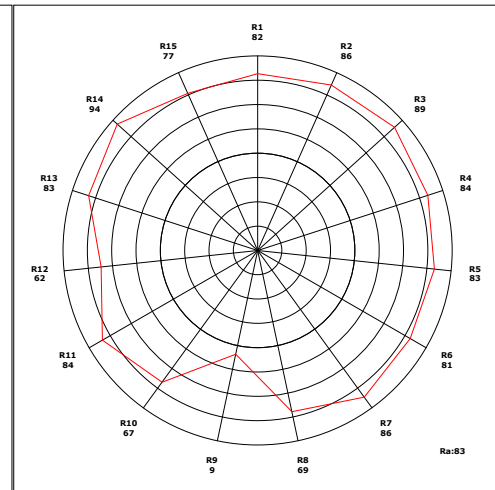
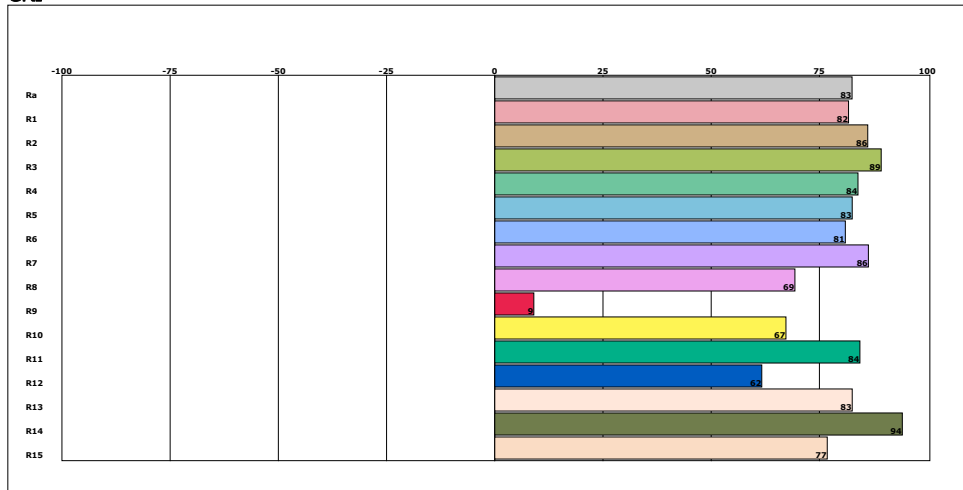
Spectrogram



CIE1931



CRI



Instrument Status

Type:
 Integral Time:50.000ms

SN: 201812748
 VPeak: 48970

Scan Range: 380-780nm
 VDark: 1685

Remark: